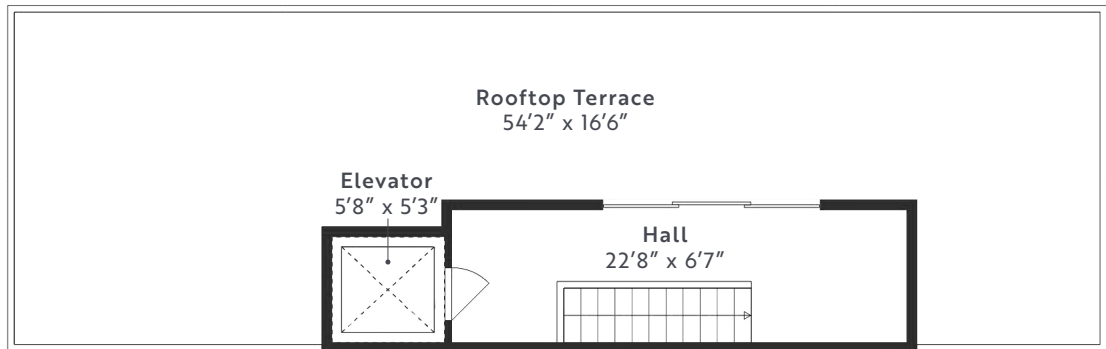
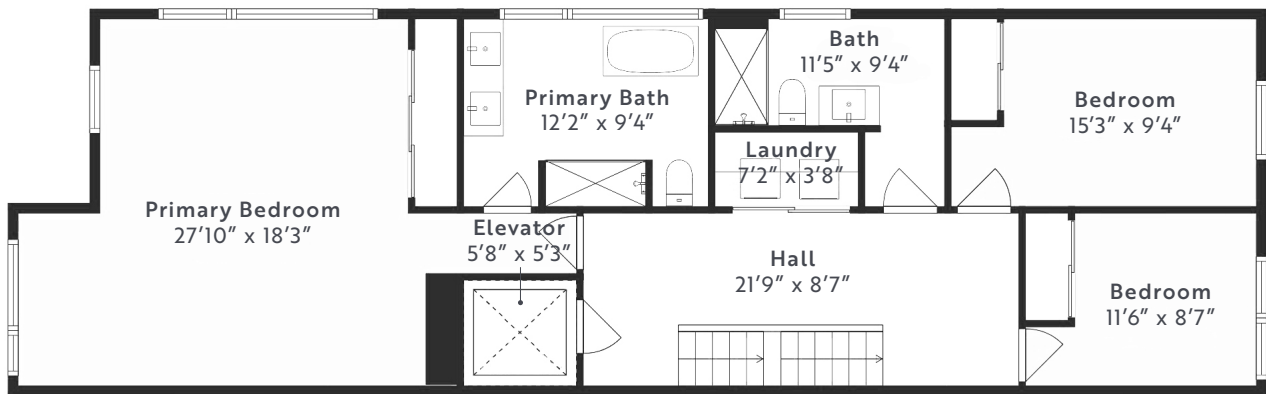


Floor Plan

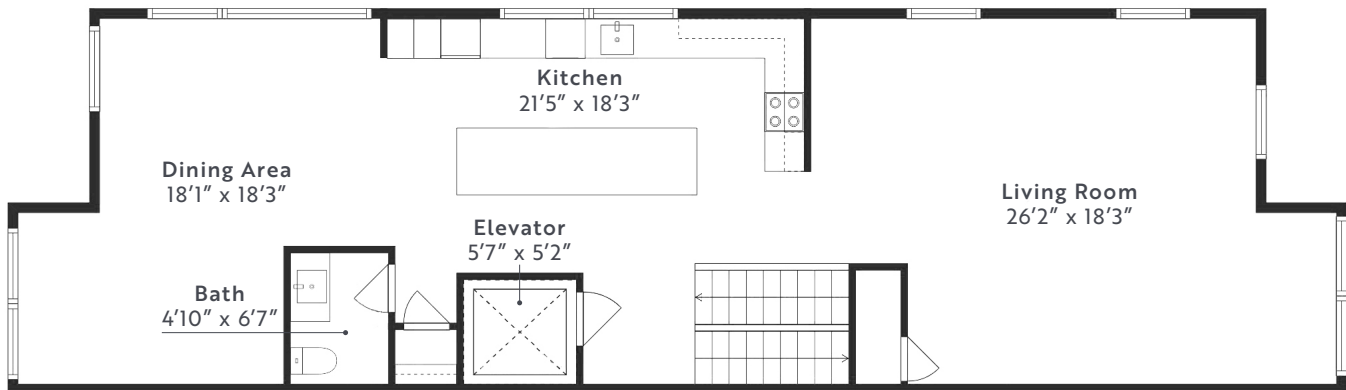
35 Birchcliff Avenue #21



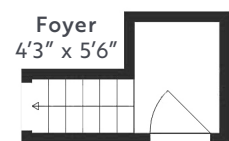
Terrace



Second Floor



First Floor



Entrance



Jenny Simon & Shane Little, Sales Representatives · JennyAndShane.ca
Sage Real Estate Ltd., Brokerage · 2010 Yonge Street, Toronto, ON M4S 1Z9

Measurements and calculations are approximate. To be used as guidelines only.